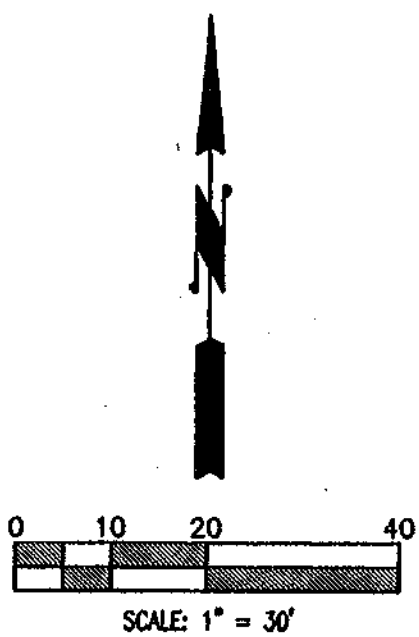
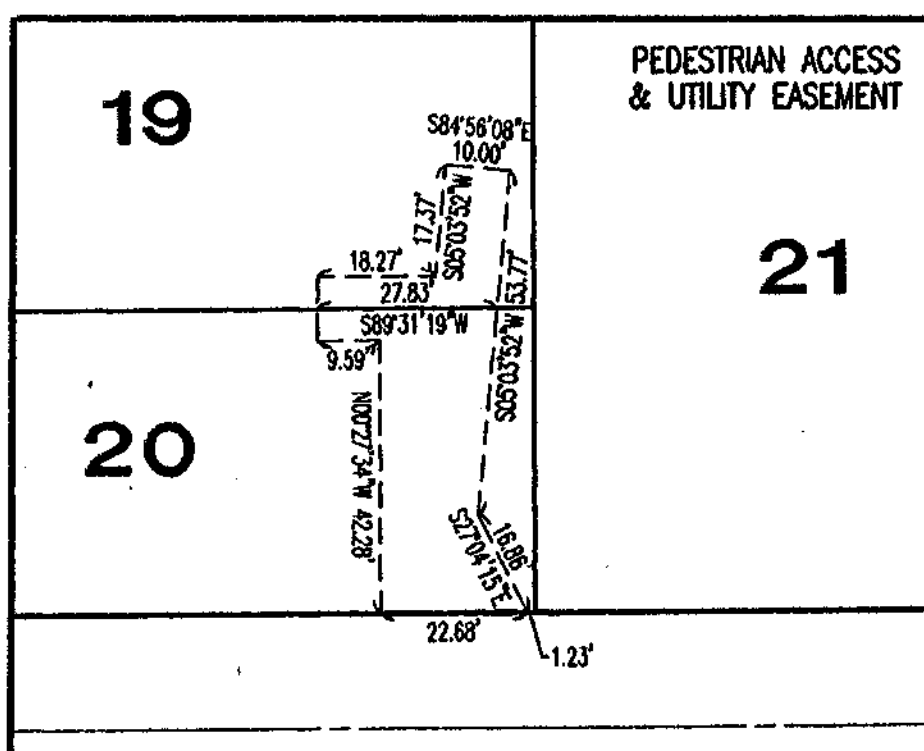
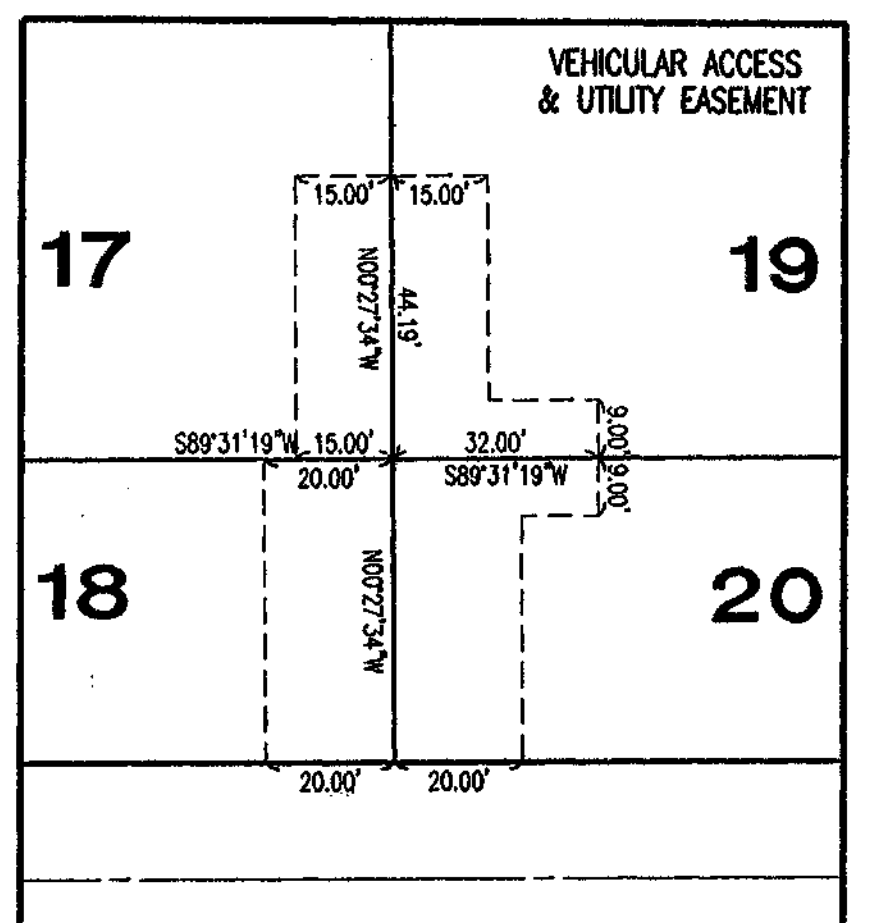
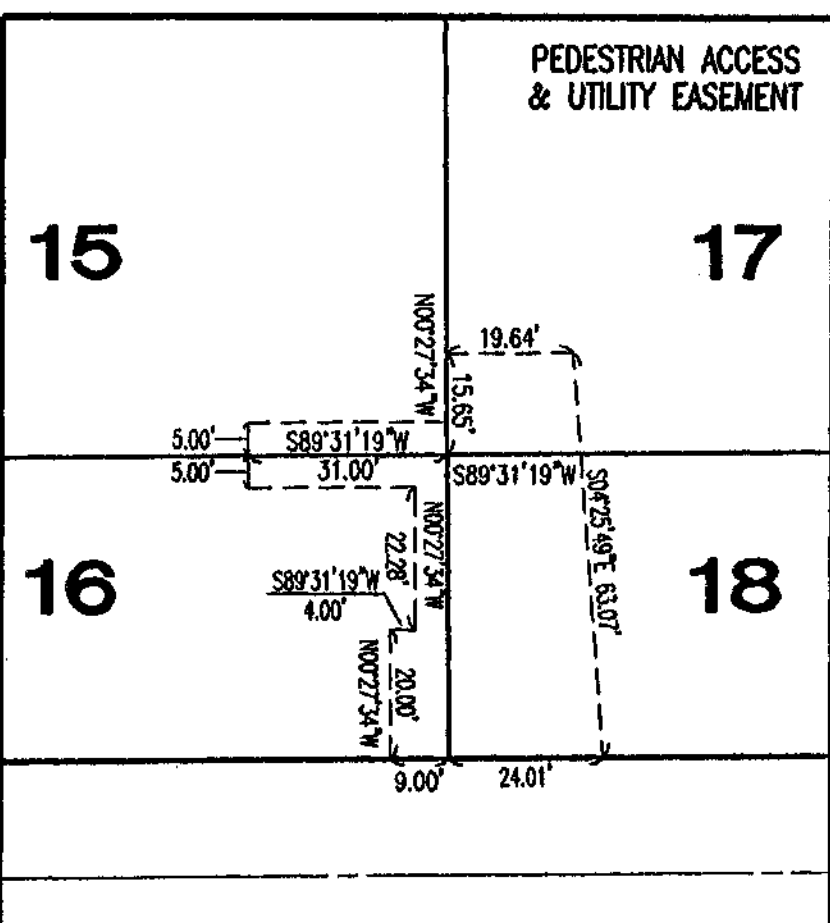
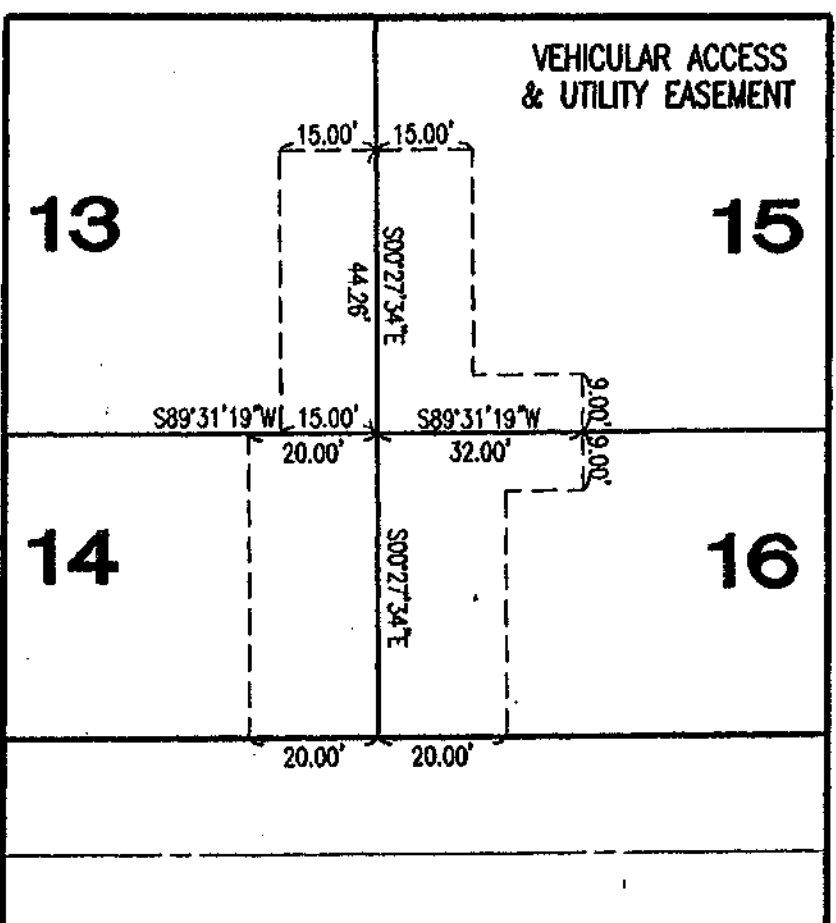
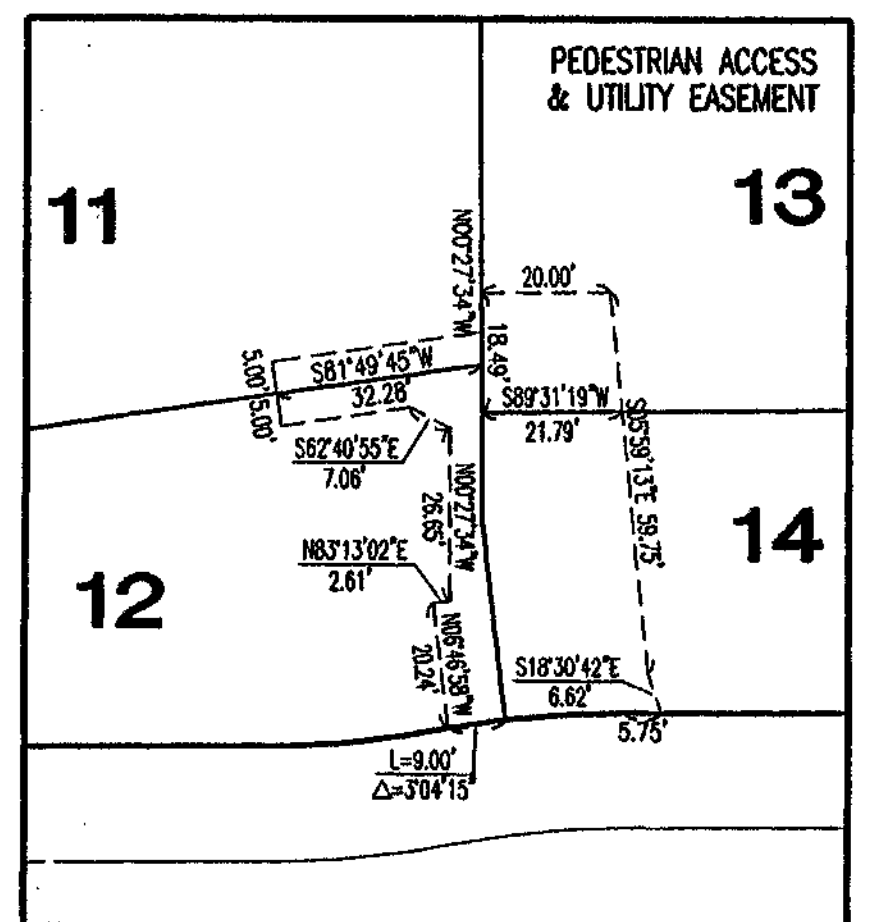
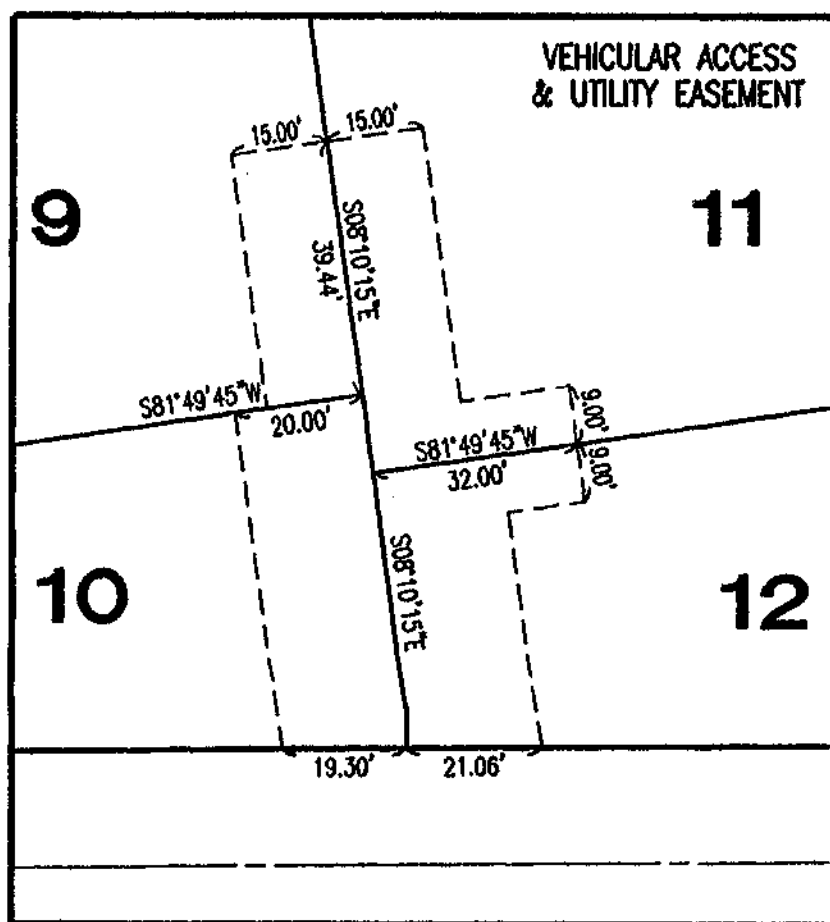
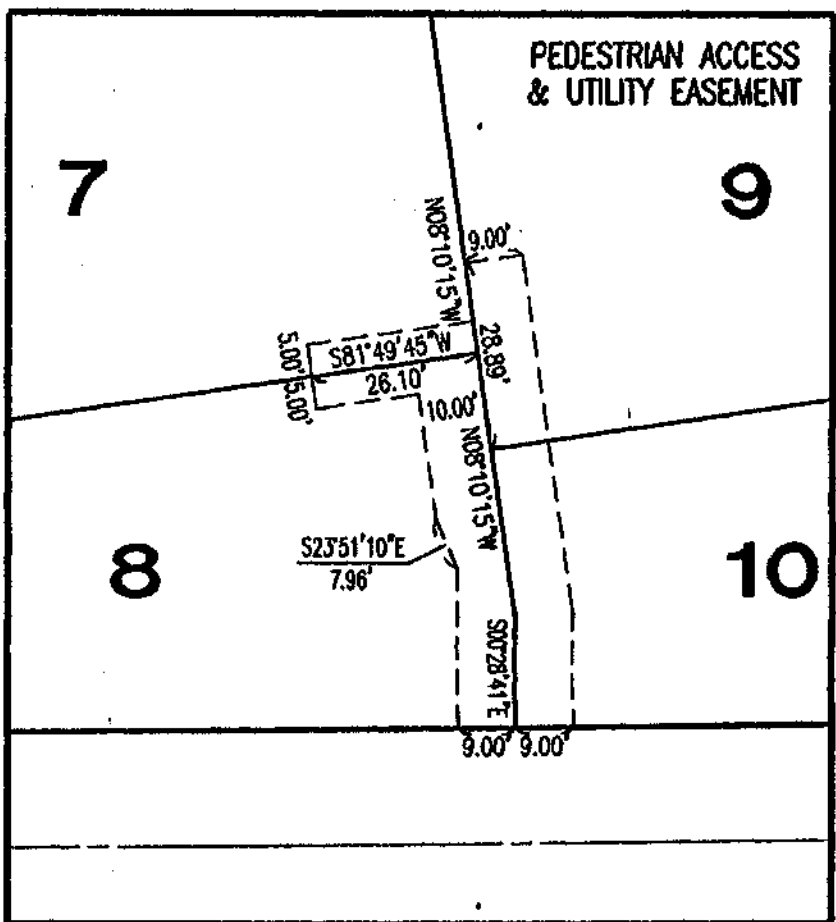
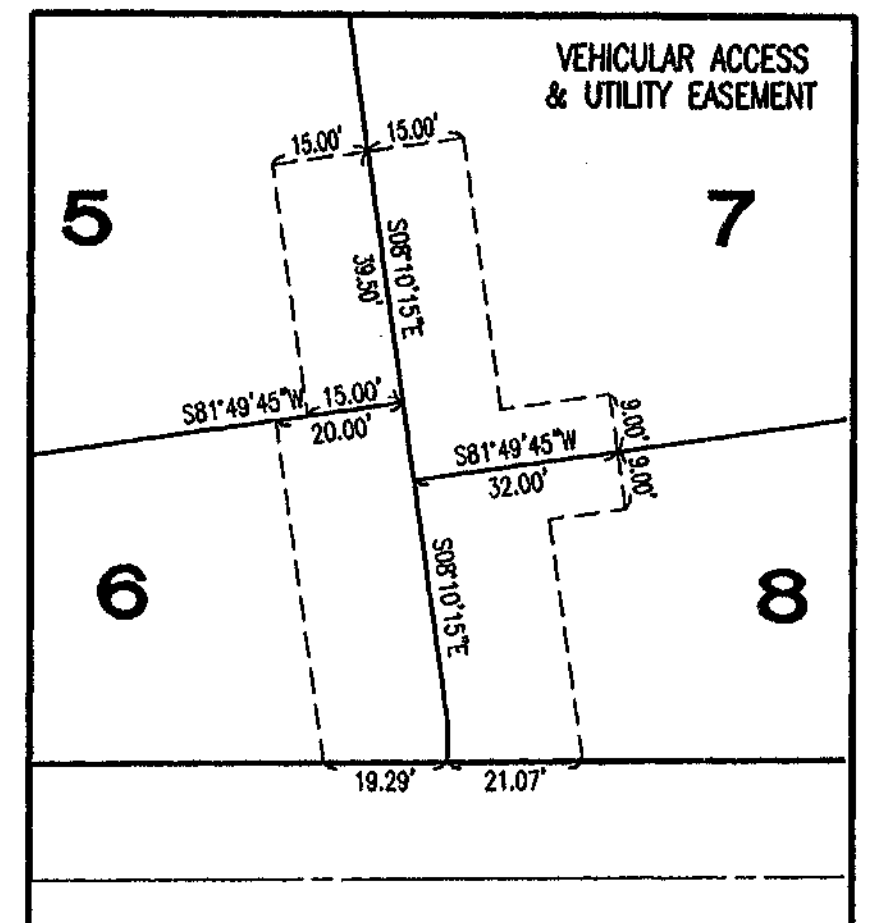
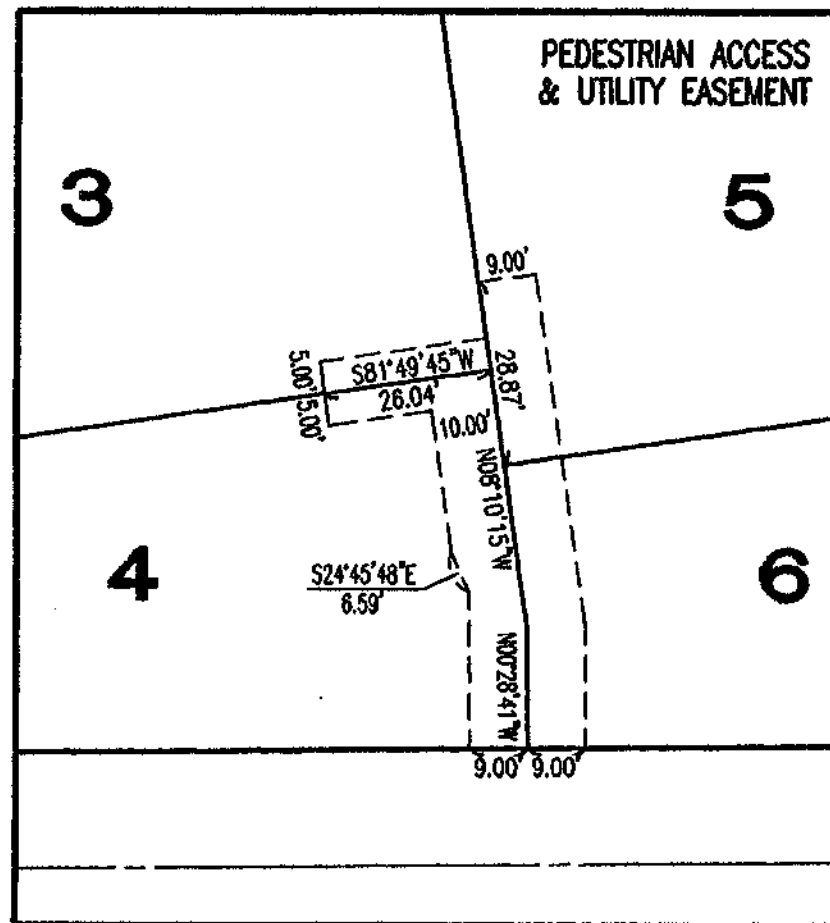
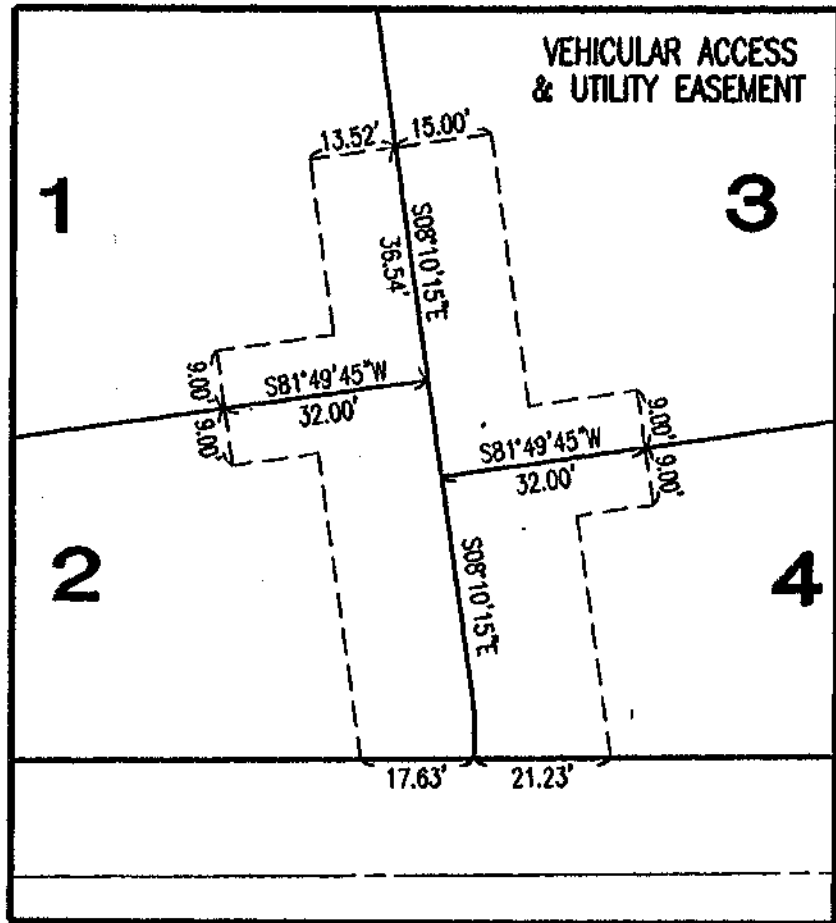


AUTUMN CREST

A PORTION OF THE SOUTHEAST QUARTER OF THE SOUTHWEST QUARTER SECTION 8, TOWNSHIP 21 NORTH, RANGE 2 EAST, W.M. CITY OF GIG HARBOR, PIERCE COUNTY, WASHINGTON



ACCESS/UTILITY EASEMENT DETAIL

SEE NOTE 7 ON SHEET 2

JOB NO. 7838



Barghausen Consulting Engineers, Inc.
 Civil Engineering, Land Planning, Surveying, Environmental Services
 18215 72nd Avenue South Kent, WA. 98032
 Telephone: (425) 251-6222 Fax: (425) 251-8782

SE1/4 OF SW1/4, SECTION 8, T21N-R2E, W.M.