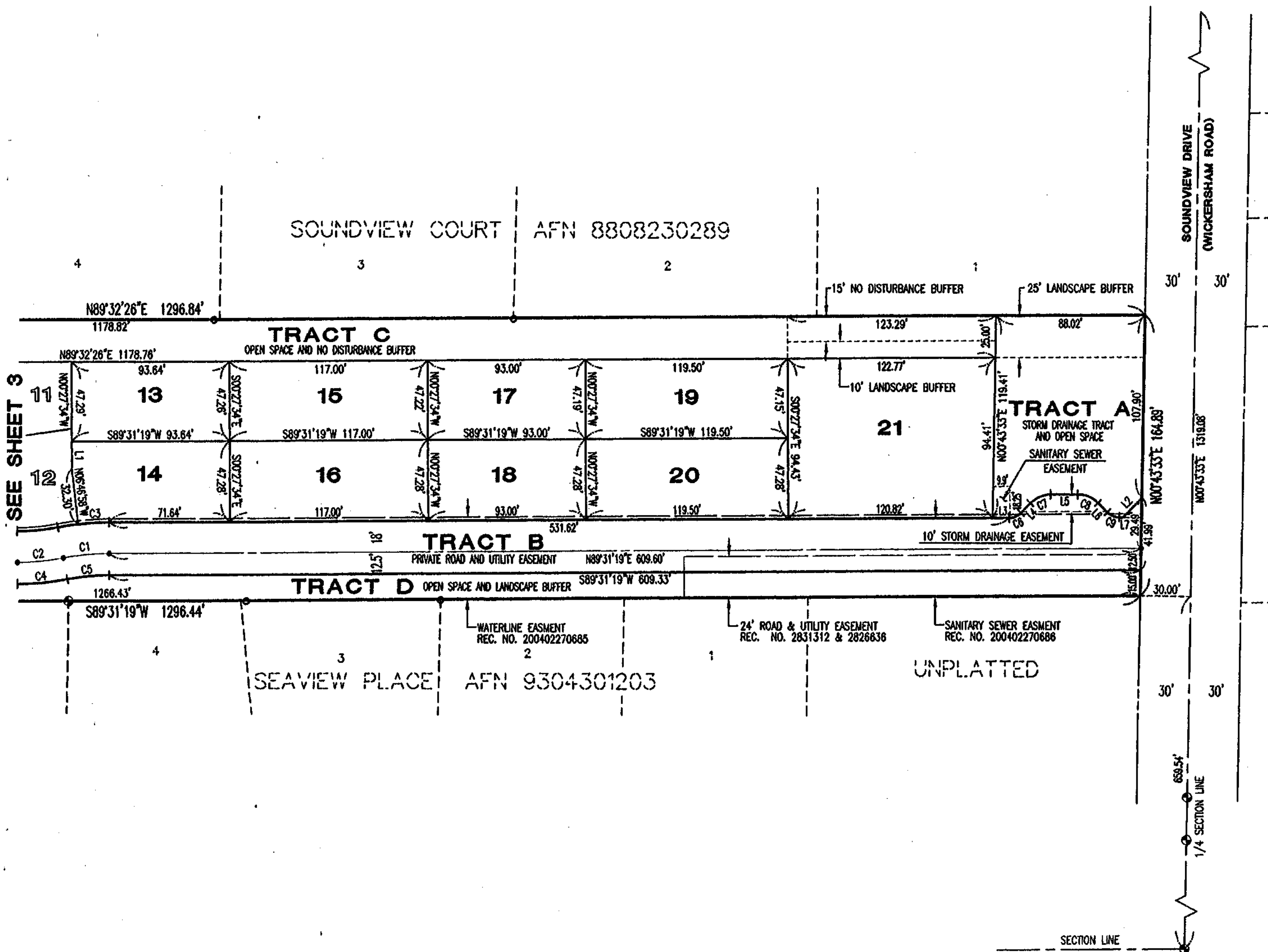


AUTUMN CREST

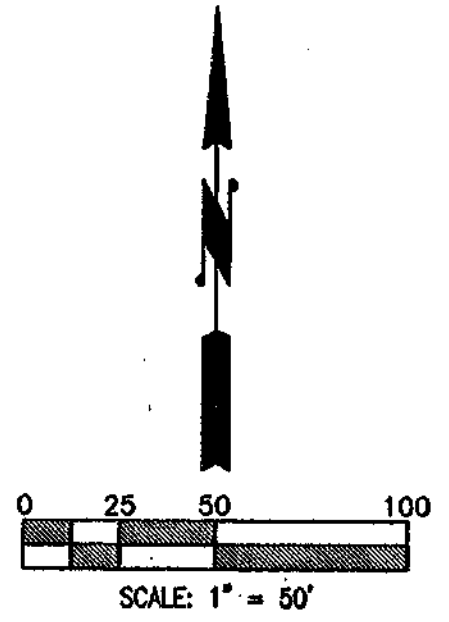
A PORTION OF THE SOUTHEAST QUARTER OF THE SOUTHWEST QUARTER
SECTION 8, TOWNSHIP 21 NORTH, RANGE 2 EAST, W.M.
CITY OF GIG HARBOR, PIERCE COUNTY, WASHINGTON



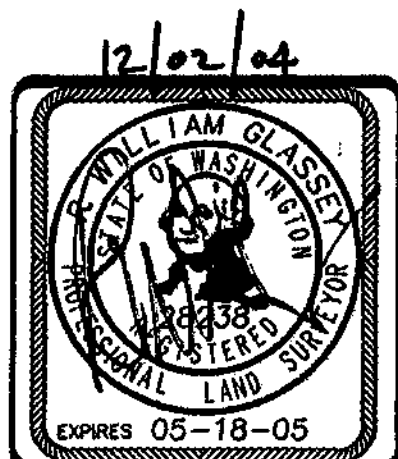
SEE SHEET 3

LINE TABLE			
LINE	LOT NO.	LENGTH	BEARING
L1	LOT 14	16.18'	N00°27'34"W
L2	TRACT A	16.01'	N43°43'11"E
L3	TRACT A	9.66'	S89°31'19"W
L4	TRACT A	7.89'	N44°29'23"E
L5	TRACT A	15.98'	N89°31'19"E
L6	TRACT A	7.76'	N45°13'42"W
L7	TRACT A	2.14'	S89°31'19"W

CURVE TABLE					
CURVE	LOT NO.	LENGTH	RADIUS	DELTA	TANGENT
C1	CL ROAD	27.42'	150.00'	10°28'31"	13.75'
C2	CL ROAD	27.42'	150.00'	10°28'31"	13.75'
C3	LOT 14	18.49'	168.00'	6°18'17"	9.25'
C4	TRACT D	29.71'	162.50'	10°28'31"	14.90'
C5	TRACT D	25.14'	137.50'	10°28'31"	12.60'
C6	TRACT A	7.86'	10.00'	45°01'56"	4.15'
C7	TRACT A	13.36'	17.00'	45°01'56"	7.05'
C8	TRACT A	13.43'	17.00'	45°14'59"	7.09'
C9	TRACT A	7.90'	10.00'	45°14'59"	4.17'



- LEGEND**
- FOUND MONUMENT (SEE SHEET 1 FOR DESCRIPTION)
 - CITY OF GIG HARBOR STANDARD ROAD MONUMENT TO BE SET AS CONSTRUCTION IS COMPLETED



12/02/04

JOB NO. 7838

Barghausen Consulting Engineers, Inc.
Civil Engineering, Land Planning, Surveying, Environmental Services
18215 72nd Avenue South Kent, WA, 98032
Telephone: (425) 251-6222 Fax: (425) 251-8782

SE1/4 OF SW1/4, SECTION 8, T21N-R2E, W.M.

SHEET 4 OF 5

File: P:\07000s\7838\survey\plots\7838p04.dwg Date/Time: 09/03/2004 10:52 Scale: 1"=50' Imason Xrefs: